

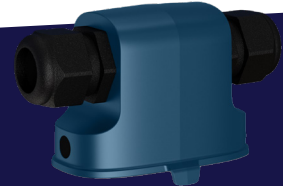


# ENTERPRISE ANCHOR

The Pozyx Enterprise anchor captures the ultra-wideband (UWB) signals from the tags, preprocesses the data and sends it to the Pozyx Positioning Server.



**STANDARD  
EDITION**

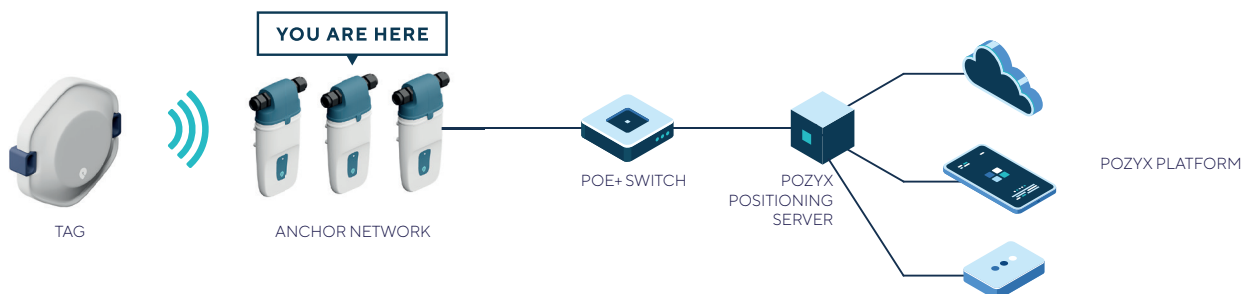


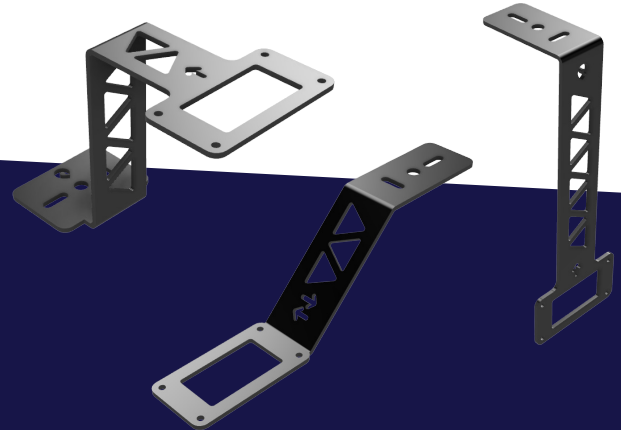
**INDUSTRIAL  
EDITION**



## — Features

- Omni-directional antenna
- Optimized for high radio range (LNA)
- Bluetooth ready
- Enables high accuracy RTLS (10-30cm)
- Support for both TWR and TDOA positioning
- Powered by Power-over-Ethernet (PoE+) or AC/DC adapter
- Fast ethernet connection to Positioning Server
- Supports daisy chaining of up to 4 anchors
- IP20 and IP66/67 casing options
- Firmware upgradeable
- SNMP support for diagnostics
- Shock detection
- Different mounting options



**STANDARD**  
EDITION**INDUSTRIAL**  
EDITION

## Specifications

CONNECTIVITY	UWB (CH2*/CH5), BLE, Fast Ethernet <small>(*) Country dependent and potentially subject to registration and authorization.</small>
CASING	ABS
OPERATIONAL TEMPERATURE	-25°C to 55°C
POWER	3.5W (typ)
POWER SUPPLY	DC: 6V - 54V PoE: 802.3af / PoE+: 802.3at
SENSORS	Accelerometer 3-Axis 2g 12 bits (100 Hz)  Air pressure sensor: 260 to 1260 hPa (24 bit)
CERTIFICATIONS	CE, FCC, ISED, UKCA, SRRC

## Mounting options

- Wall bracket
- Corner bracket
- Ceiling bracket

**STANDARD**  
EDITION**INDUSTRIAL**  
EDITION

### DIMENSIONS

158 × 98 × 53 mm (l × w × h)

229 × 98 × 59 mm (l × w × h)

### WEIGHT

170g

270g

### INGRESS PROTECTION

IP20

IP66/67

## Contact

GENERAL INQUIRY  
[info@pozyx.io](mailto:info@pozyx.io)SALES DEPARTMENT  
[sales@pozyx.io](mailto:sales@pozyx.io)TECHNICAL SUPPORT  
[support@pozyx.io](mailto:support@pozyx.io)LINKEDIN  
[@pozyx](https://www.linkedin.com/company/pozyx)INSTAGRAM  
[@pozyxlabs](https://www.instagram.com/pozyxlabs)TWITTER  
[@pozyxlabs](https://twitter.com/pozyxlabs)FACEBOOK  
[@pozyx](https://www.facebook.com/pozyx)